

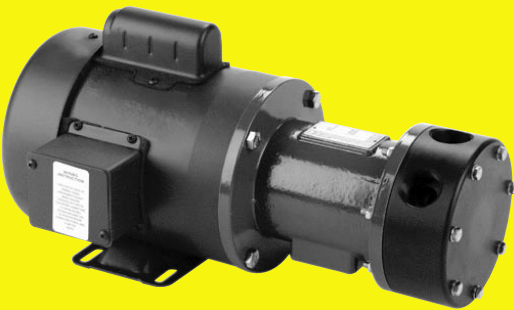
SERFILCO®

SERIES 'TM-T' HORIZONTAL TURBINE PUMPS

BULLETIN
P-515B
OCT. 2004



Series 'TM-T' polypropylene / EPDM



Series 'TM-T' PVDF / Viton

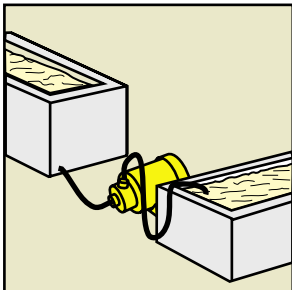
**MAGNETIC COUPLED,
REGENERATIVE TURBINE,
HIGH HEAD, LOW FLOW FOR:**

***PLATING / WET PROCESSING
ACIDS / CAUSTIC
CHEMICAL / FUME SCRUBBING***

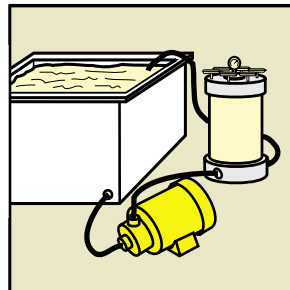
- **Flows from 2 - 32 GPM or 150' TDH @ 60 Hz**
(10 - 100 LPM or 31.8m TDH @ 50 Hz)
- **Non-metallic solution contact**
Polypropylene / EPDM or PVDF / Viton® pumps
(See a chemical resistance chart)
- **Seal-less, leak-free magnetic coupled**
- **Rugged, precision machined from solid bar**
- **For use with standard NEMA or IEC 'C'-face motors**

Designed for low flow, high head applications, Series 'TM-T' regenerative pumps provide an extremely reliable and economical alternative to oversized centrifugal pumps operated near shut-off with excessive bypass and power requirements. 'TM-T'

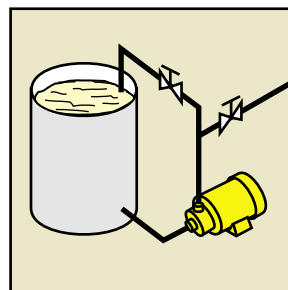
non-metallic turbine pumps exhibit excellent chemical resistance and they are designed to provide extremely low wearing characteristics. Also, because of their turbine design, Series 'TM-T' pumps can be throttled to a required duty point without bypassing.



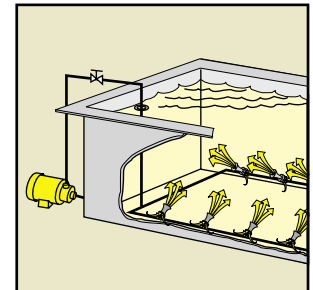
WASTE TREATMENT



FILTRATION

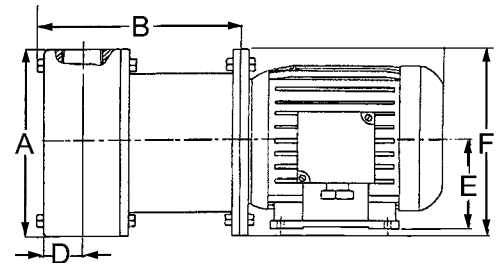
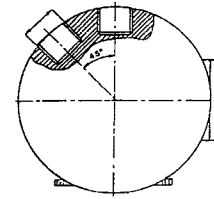
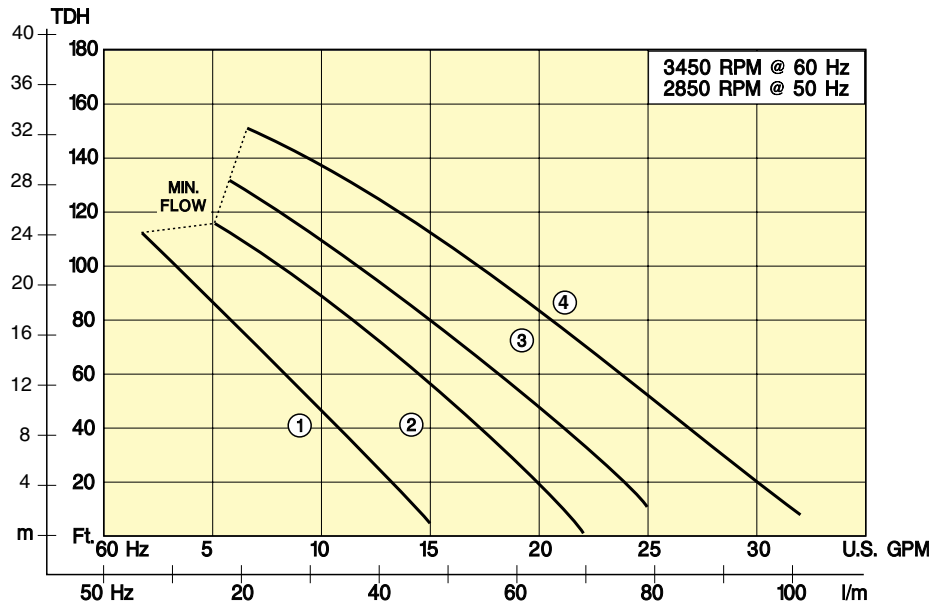


TRANSFER PUMPING



**EDUCTOR AGITATION
and MIXING**

SERIES 'TM-T' PUMPS Specifications and ordering information



NOTE: Motor dimensions may vary.

DIMENSIONS Inches						
MODEL	NEMA FRAME	A	B	D	E	F
TMT33 & TMT52	56C	5-1/2	7-3/4	1-3/8	6-5/8	3-1/2
TMT53 & TMT72	143TC	6-1/4	8-1/2	1-9/16	6-5/8	3-1/2

Series 'TM-T' Polypropylene / EPDM: Polypropylene casing, impeller magnet enclosure and rear casing. Silica-free ceramic shaft and stationary bushing. Carbon filled PTFE rotating sleeve and bushing, EPDM 'O'-ring. (Maximum temperature 150°F, maximum pressure 110 PSI.) *To order, use Price Code No. below.*

FLOW CURVE	MIN. FLOW ¹		MAX. FLOW ¹		MAX. TDH ²		MAX. S. G. ³	HP	IMPELLER DIA.	CONNECTIONS SUCT. & DISCH.	MODEL NO.	PRICE CODE NO.	SHIP. WT. (lb.)
	GPM	LPM	GPM	LPM	ft.	m							
1	3	9.4	15	47	110	23.3	1.3	1.0	2.17"	3/4" FNPT	TMT33-2.17 D1.0	51-0120	43
2	5	16	22	69	112	23.7	1.2	1.5	2.52"	1" FNPT	TMT52-2.52 D1.5	51-0121	45
3	6	19	25	79	135	28.6	1.2	2.0	2.91"	1" FNPT	TMT53-2.91 D2.0	51-0122	65
4	7	22	32	100	150	31.8	1.2	3.0	2.91"	1" FNPT	TMT72-2.91 D3.0	51-0123	67

Series 'TM-T' PVDF / Viton: Same construction as polypropylene except PVDF casing, impeller magnet enclosure, rear casing and Viton 'O'-ring. (Maximum temperature 195°F, maximum pressure 110 PSI.) *To order PVDF / Viton pump, add -K to Model No. and Price Code No.*

TO ORDER —

EPDM, add **-L** to Model & PCN
Viton, add **-V** to Model & PCN

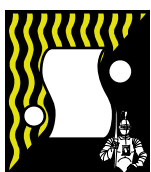
Motors are TEFC, 230 - 460V / 3 / 60 Hz.
To order 115 - 230V / 1 / 60 Hz,
change **D** to **C** in Model No.
add **-1** to Price Code No.

Consult sales dept. for 50 Hz motors.

¹ GPM @ 60 Hz, LPM @ 50 Hz

² ft TDH @ 60 Hz, m TDH @ 50 Hz

³ Motors are non-overloading at stated specific gravity.



SERFILCO, LTD.

2900 MacArthur Blvd. 847-509-2900
Northbrook, IL 60062-2005 U.S.A. 800-323-5431
e-mail: sales@serfilco.com FAX: 847-559-1995
www.serfilco.com