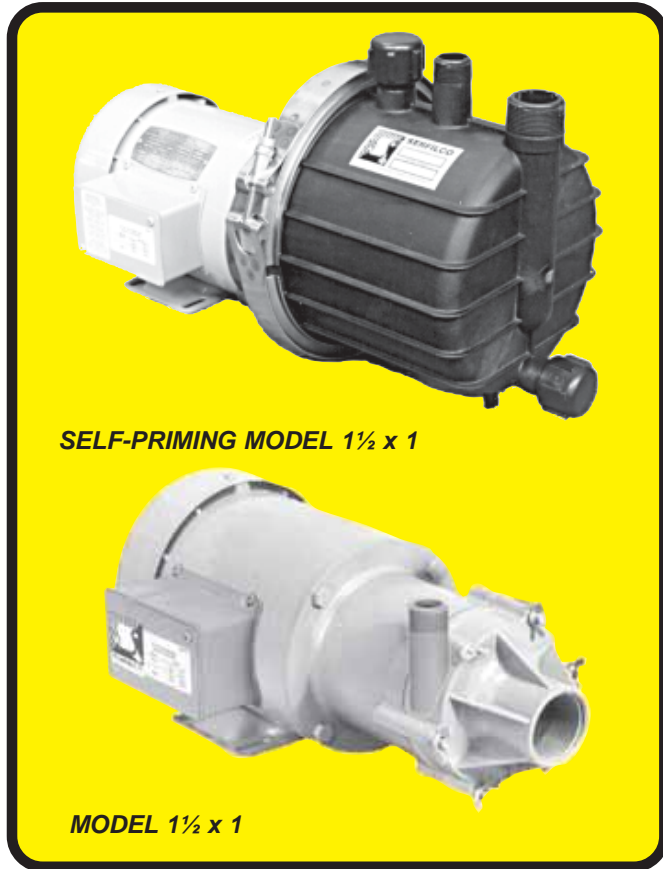


SERFILCO® SERIES 'D' MAGNETIC-COUPLED PUMPS

BULLETIN
P-504R
OCT. 2000

SEAL-LESS AND "LEAK-PROOF" FOR TOTAL SOLUTION CONTAINMENT
Reliable, trouble-free pumping for:



WASTE TREATMENT / FUME SCRUBBING CHEMICALS / PHOTOGRAPHIC ACIDS / PLATING

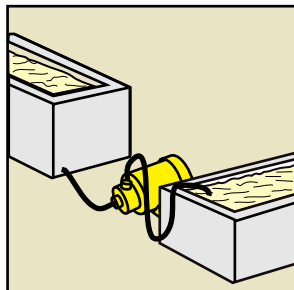
- **Corrosion resistant**
Polypropylene - PVDF - Ryton®
316 stainless steel
(See Chemical Resistance Chart)
- **Centrifugal** – quiet, vibration-free
- **Flows to 53 U.S. GPM or 58 FT. TDH @ 60 Hz**
(167 LPM or 12m @ 50 Hz)
- **Maximum liquid temperature**
Polypropylene and Ryton: 150°F (65°C)
[To 190°F (88°C) in non-aggressive liquids]
PVDF: 220°F (104°C)
316 stainless steel: 250°F (121°C)
- **Rugged construction**
Designed for continuous duty
Horizontal or vertical discharge
- **Severe duty motor**
All motors carry 1.15 service factor at 50 and 60 Hz
Single phase motors have automatic thermal
overload protection

SERIES 'D' Magnetic Coupled Pumps are seal-less, providing for maintenance-free and "leak-proof" operation. The magnetic coupling acts as a clutch to provide overload protection. The broad range of construction materials allows for a variety of applications and service with most corrosive solutions.

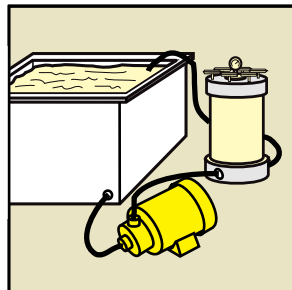
The impeller magnet assembly floats in the radial magnetic field set up by the motor driven external drive magnet. The impeller is designed to deliver the maximum

flow and pressure utilizing the available strength of the synchronized magnets.

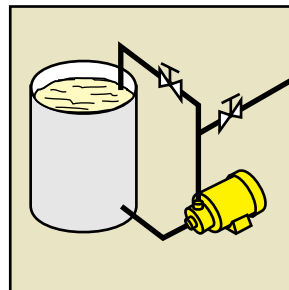
The standard diameter impeller is suitable for water-like liquids to 1.1 specific gravity. Liquids having a higher specific gravity can be pumped if the overall diameter of the impeller is reduced, the outlet flow is restricted, or the restrictions from a filter or other head loss is sufficient to keep the impeller magnet in synchronization.



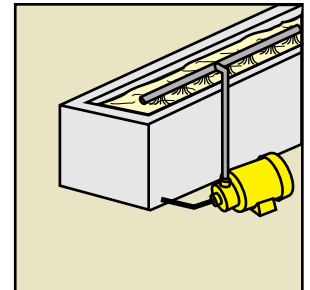
WASTE TREATMENT



FILTRATION



MIXING and
TRANSFER PUMPING



RECIRCULATION

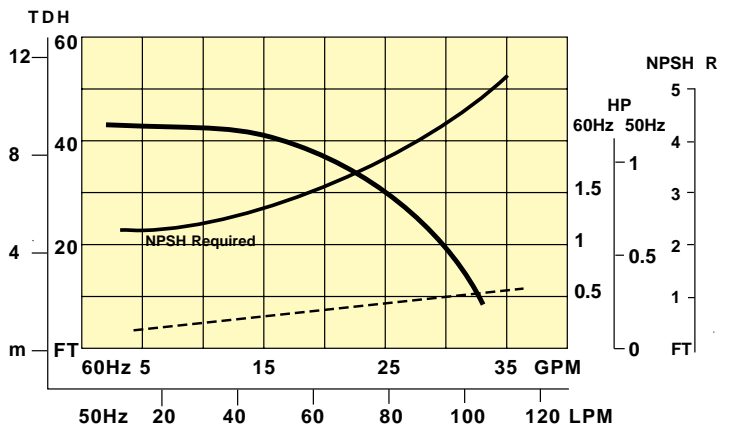
SERIES 'D' PUMP Specifications

Pump materials of construction are as specified, all of which include a fluoride resistant ceramic spindle and thrust washer. Casing 'O' ring is Viton® and external fasteners are stainless steel. Standard impeller is designed to pump solutions having a specific gravity up to 1.1. (See flow curves.) For solutions having a higher specific gravity, up to 1.8 maximum, a trimmed impeller is required. Flow rate and TDH will

be proportionately reduced. Refer to impeller trim chart, specify impeller diameter and add Price Code No. 48-0200.

Motors are chemical service rated continuous duty, TEFC or explosion proof, painted two-part epoxy gray paint. An eight foot (2.4m) three-wire cord and plug are supplied on all TEFC single phase motors. Three phase and explosion-proof motors are supplied without cord or plug.

SERIES 'D' 1 x 3/4 - Capacities to 33 U. S. GPM or 43 ft. TDH @ 60 Hz (104 LPM or 9.1m @ 50 Hz)



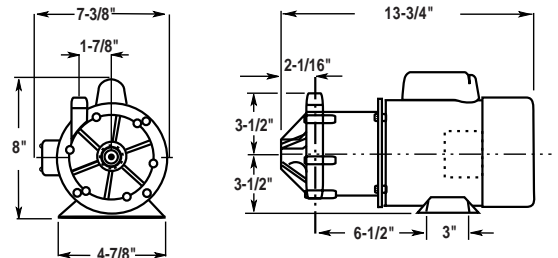
CONSTRUCTION MATERIALS

MODEL	SUCTION CASING	IMPELLER	BUSHING ³	LINER	MAX. TEMP	MAX. INLET PRESSURE
					°F (°C)	PSI (BAR)
MRGR ¹ MKGC ²	Ryton PVDF	Polypro PVDF	Ryton Carbon	Ryton PVDF	150 (65) 220 (104)	50 (3.5)

¹ Glass filled casing, liner, and impeller
² Carbon fiber filled PVDF

³ Ryton bushings are a blend of Ryton, PTFE, and carbon

PORT SIZES - 1" F x 3/4" M (NPT)



IMPELLER TRIM CHART

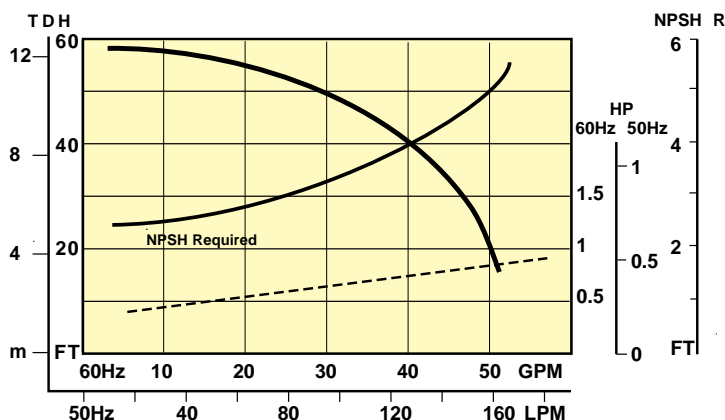
SPECIFIC GRAVITY	1.0 to 1.1	1.1 to 1.3	1.3 to 1.5	1.5 to 1.7	1.7 to 1.9	1.9 to 2.0
IMPELLER DIAMETER 60 Hz	3-1/2 std.	3-1/4	3-1/8	3.0	2-7/8	2-3/4
50 Hz	88.9 mm (3-1/2 in) std.			82.5mm (3-1/4 in.)		

TO ORDER, use Price Code Number

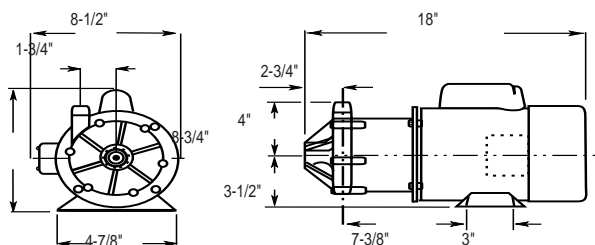
MODEL NUMBER	w/TEFC MOTOR			w/EXP. MOTOR CLASS I GROUP D CLASS II GROUP F & G			MOTOR VOLTAGE
	ADD TO MOD. NO.	PRICE CODE NO.	SHIPPING WEIGHT	ADD TO MOD. NO.	PRICE CODE NO.	SHIPPING WEIGHT	
	(HP)		Lbs (kg)	(HP)		Lbs (kg)	
1 x 3/4 MRGR 1 x 3/4 MKGC	-C.5	44-4101 44-4105	30 (14)	-E.75	44-4301A ⁴ 44-4302A ⁴	37 (17)	115/190-230/1/50-60
1 x 3/4 MRGR 1 x 3/4 MKGC	-D.5	44-4101C 44-4105C	27 (12)	-F.75	44-4301C 44-4302C	34 (15)	190-230/380-415-460/3/50-60

⁴ 60 Hz only

SERIES 'D' 1-1/2 x 1 - Capacities to 53 U. S. GPM or 58 ft.TDH @ 60 Hz (167 LPM or 12m @ 50 Hz)



PORT SIZES - 1-1/2" F x 1" M (NPT)



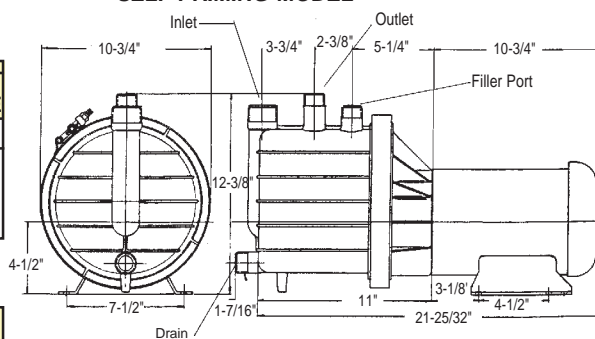
CONSTRUCTION MATERIALS

MODEL	SUCTION CASING	IMPELLER	BUSHING ³	LINER	MAX. TEMP	MAX. INLET PRESSURE
					°F (°C)	PSI (BAR)
MPGR ¹	Polypro	Polypro	Ryton	Ryton	150 (65)	50 (3.5)
MSGR	316 SS	316 SS	Ryton	316 SS	250 (121)	200 (13.8)
MKGC ²	PVDF	PVDF	CARBON	PVDF	220 (104)	75 (5.2)

IMPELLER TRIM CHART

SPECIFIC GRAVITY	1.0 to 1.1	1.1 to 1.3	1.3 to 1.5	1.5 to 1.7	1.7 to 1.9	1.9 to 2.0
IMPELLER DIAMETER 60 Hz	3-3/4 std.	3-5/8	3-1/2	3-3/8	3-1/4	3-1/8
50 Hz	95.2mm (3-3/4 in) std.				88.9 mm (3-1/2 in.)	

SELF-PRIMING MODEL



¹ Glass filled casing, impeller and liner

² Carbon fiber filled PVDF

³ Ryton bushings are a blend of Ryton, PTFE, and carbon

TO ORDER, use Price Code Number

MODEL NUMBER	w/TEFC MOTOR			w/EXP. MOTOR CLASS I GROUP D CLASS II GROUP F & G			MOTOR VOLTAGE
	ADD TO MOD. NO.	PRICE CODE NO.	SHIPPING WEIGHT	ADD TO MOD. NO.	PRICE CODE NO.	SHIPPING WEIGHT	
	(HP)		Lbs (kg)	(HP)		Lbs (kg)	
1-1/2 x 1 MPGR	-C.75	44-0581	42 (19)	-E.75	44-0571A ⁵	49 (22)	115/190-230/1/50-60
1-1/2 x 1 MSGR		44-0441	49 (22)		44-0691A ⁵	56 (25)	
1-1/2 x 1 MKGC		44-0585	42 (19)		44-4304A ⁵	49 (22)	
1-1/2 x 1 MPGR	-D.75	44-0581C	32 (15)	-F.75	44-0571C	39 (18)	190-230/380-415-460/3/50-60
1-1/2 x 1 MSGR		44-0441C	39 (18)		44-0691C	46 (21)	
1-1/2 x 1 MKGC		44-0585C	32 (15)		44-4304C	39 (18)	

SELF-PRIMING MODELS⁴

1-1/2 x 1 SMPGR	-C.75	44-3350	47 (21)	-E.75	44-3352 ⁵	54 (24)	115/190-230/1/50-60
1-1/2 x 1 SMKGC		44-3351	47 (21)		44-3353 ⁵	54 (24)	
1-1/2 x 1 SMPGR	-D.75	44-3350C	37 (17)	-F.75	44-3352C	44 (20)	190-230/380-415-460/3/50-60
1-1/2 x 1 SMKGC		44-3351C	37 (17)		44-3353C	44 (20)	

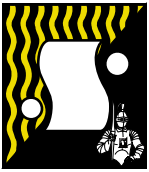
OPTIONAL

⁴ Maximum suction lift 10 feet

⁵ 60 Hz only

⁶ This is a replacement for bushings formerly referred to as Chemloy

OPTIONAL	EXAMPLE	ADD TO PRICE CODE NO.
Chemic (PTFE & mica) bushing ⁶	MPG K	- K
Carbon bushing	MPG C	- L
Stainless steel liner	MP S GR	- M
Stainless steel spindle & thrust washer	M S SR	- N



SERFILCO[®], LTD.

2900 MacArthur Blvd. 847-509-2900
Northbrook, IL 60062-2005 U.S.A. 800-323-5431
e-mail: sales@serfilco.com FAX: 847-559-1995
www.serfilco.com

BULKRATE
U.S. POSTAGE
PAID
NORTHBROOK, ILLINOIS
PERMIT NO. 2018

Solve your fluid handling
problems with these energy
saving, corrosion-resistant
PLASTIC PUMPS!

SERFILCO also offers:

VERTICAL PUMPS



SERIES 'EH'

Bearing-less cantilevered shaft design allows pump to run dry indefinitely without damage. Available in CPVC, polypropylene or PVDF, with a standard body length of 12" and an extended model offering an 18" body.

Pumps provide non-metallic solution contact with flow rates to 185 U.S. GPM or 145 ft. TDH @ 60 Hz.

END SUCTION CENTRIFUGAL PUMPS



SERIES 'HE'

Enclosed impeller makes this chemically resistant plastic pump the most energy efficient. Available with single or double "water flush seals".

SELF-PRIMING PUMPS



SERIES 'S'

A lightweight, chemically resistant plastic pump. Used for general service on water and chemicals within a pH range of 4 to 9.