

# SERFILCO®

## SERIES 'TM-VT' VERTICAL TURBINE PUMPS



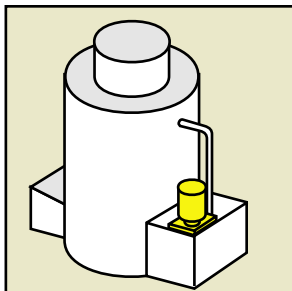
**MAGNETIC COUPLED, REGENERATIVE  
VERTICAL TURBINE, HIGH HEAD, LOW  
FLOW FOR:**

***PLATING / WET PROCESSING  
ACIDS / CAUSTICS  
CHEMICALS / FUME SCRUBBING***

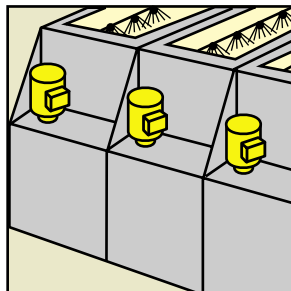
- **Flows from 2 - 32 GPM or 150' TDH @ 60 Hz**  
(10 - 100 LPM or 31.8m TDH @ 50 Hz)
- **Non-metallic solution contact**  
Polypropylene / EPDM or PVDF / Viton® pumps  
(See a chemical resistance chart)
- **Seal-less, leak-free magnetic coupled**
- **Sealed column and pump head — shaft, 'C' face  
and motor bearing protected from fumes**
- **Rugged, precision machined from solid bar**
- **For use with standard NEMA or IEC 'C'-face  
motors**

Designed for low flow, high head applications, Series 'TM-VT' vertical turbine pumps provide an extremely reliable and economical alternative to oversized centrifugal pumps operated near minimum flow with excessive bypass and power requirements. 'TM-

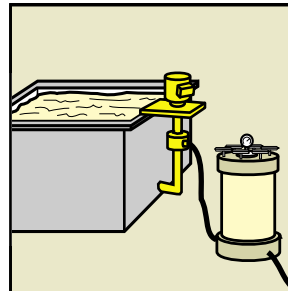
VT' non-metallic turbine designs exhibit excellent chemical resistance and low wearing characteristics. Also, because of their turbine design, Series 'TM-VT' pumps can be throttled to a required duty point without bypassing.



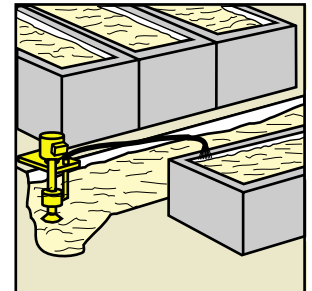
**FUME SCRUBBING**



**PCB WET  
PROCESSING**

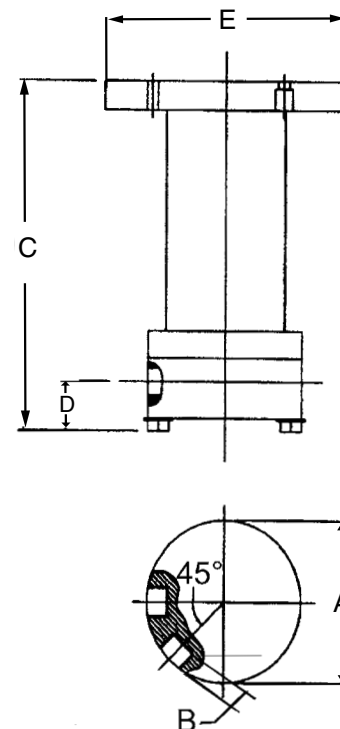
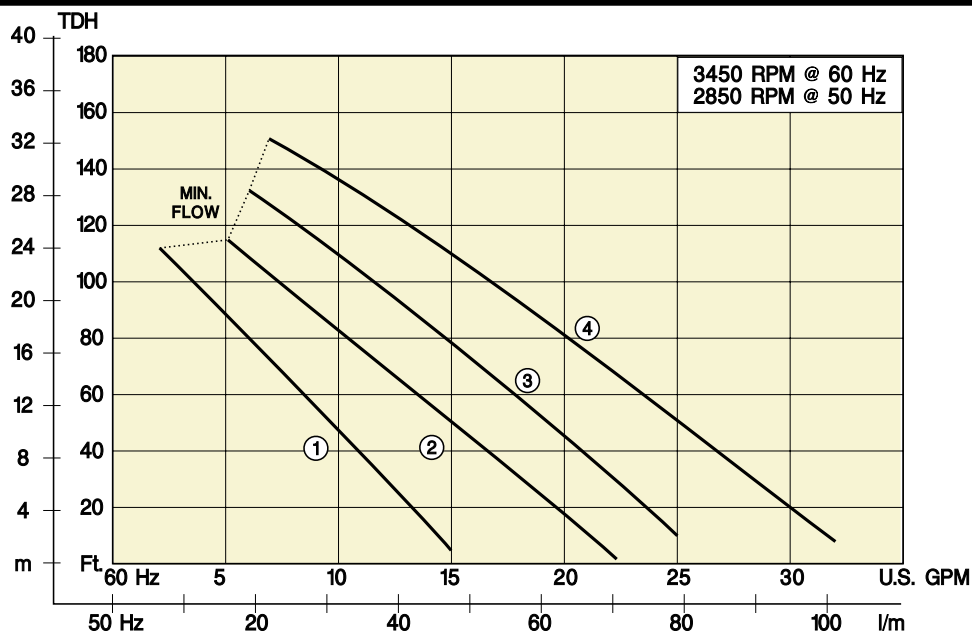


**OUT-OF-TANK  
PUMPING and FILTRATION**



**SUMP DRAINING  
and WASTE TREATMENT**

## SERIES 'TM-VT' PUMPS Specifications and ordering information



DIMENSIONS Inches						
MODEL	NEMA FRAME	A	B	C	D	E
TMVT33	56C	5.50	0.63	12.13	1.63	8.63
TMVT52	56C	5.50	0.63	12.13	1.63	8.63
TMVT53	143TC	6.25	0.75	12.63	1.88	8.63
TMVT72	143TC	6.25	0.75	12.63	1.88	8.63

**NOTE:** Motor dimensions may vary.

**Series 'TM-VT' Polypropylene / EPDM:** Polypropylene casing, column, impeller magnet enclosure and rear casing. Silica-free ceramic shaft and stationary bushing. Carbon filled PTFE rotating sleeve and bushing, EPDM 'O'-ring. (Maximum temperature 150°F, maximum pressure 110 PSI.) *To order, use Price Code No. below.*

FLOW CURVE	MIN. FLOW <sup>1</sup>		MAX. FLOW <sup>1</sup>		MAX. TDH <sup>2</sup>		MAX. S. G. <sup>3</sup>	HP	IMPELLER DIA.	CONNECTIONS SUCT. & DISCH.	MODEL NO.	PRICE CODE NUMBER	SHIPPING WT. (lbs.)
	GPM	LPM	GPM	LPM	ft	m							
1	3	9.4	15	47	110	23.3	1.3	1.0	2.17"	3/4" FNPT	TMVT33-2.17 D1.0	51-0140	56
2	5	16	22	69	112	23.7	1.2	1.5	2.52"	1" FNPT	TMVT52-2.52 D1.5	51-0141	58
3	6	19	25	79	135	28.6	1.2	2.0	2.91"	1" FNPT	TMVT53-2.91 D2.0	51-0142	65
4	7	22	32	100	150	31.8	1.2	3.0	2.91"	1" FNPT	TMVT72-2.91 D3.0	51-0143	68

**Series 'TM-VT' PVDF / Viton:** Same construction as polypropylene except PVDF casing, impeller magnet enclosure, rear casing and Viton 'O'-ring. (Maximum temperature 150°F, maximum pressure 110 PSI.)

*To order PVDF / Viton pump, add -K to Model No. and Price Code No. above*

### TO ORDER —

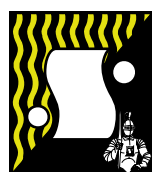
EPDM, add **-L** to Model & PCN  
 Viton, add **-V** to Model & PCN  
 Motors are TEFC, 230 - 460V / 3 $\phi$  / 60 Hz.  
 To order 115 - 230V / 1 $\phi$  / 60 Hz, change **D** to **C** in Model No. and add **-1** to Price Code No.

Consult sales department for 50 Hz motors.

<sup>1</sup> GPM @ 60 Hz, LPM @ 50 Hz

<sup>2</sup> ft. TDH @ 60 Hz, m TDH @ 50 Hz

<sup>3</sup> Motors are non-overloading at stated specific gravity.



# SERFILCO<sup>®</sup>, LTD.

2900 MacArthur Blvd. 847-559-1777  
 Northbrook, IL 60062-2005 U.S.A. 800-323-5431  
 e-mail: sales@serfilco.com FAX: 847-559-1995  
 www.serfilco.com