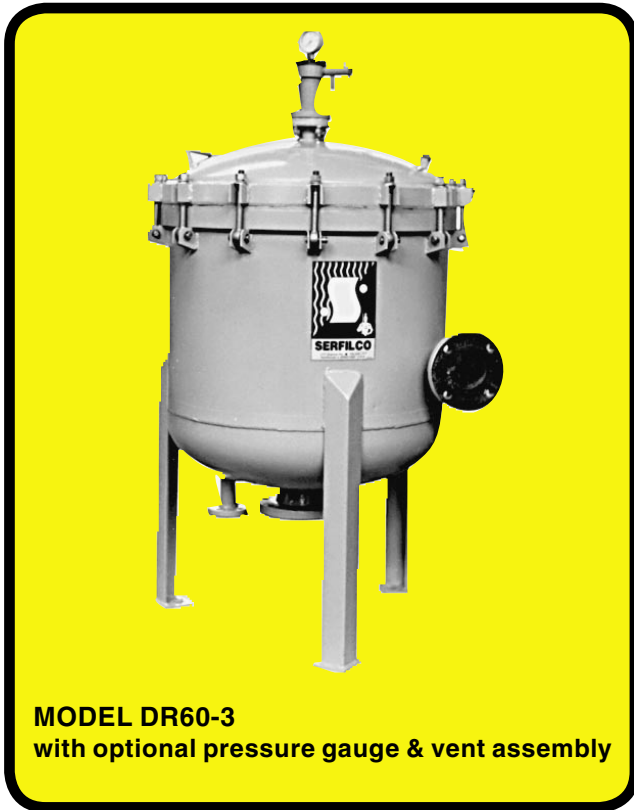


120 - 240 cartridges or 20 - 35 discs



MODEL DR60-3
with optional pressure gauge & vent assembly

Designed for:

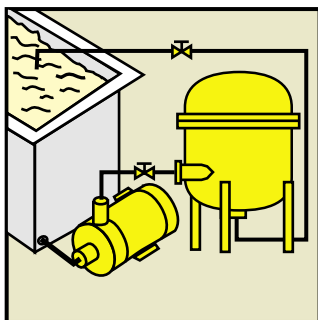
*WATER TREATMENT / FOOD PROCESSING
CLEANING / PHOTOGRAPHIC
ELECTROPLATING / PHARMACEUTICAL
CHEMICAL / PETROCHEMICAL / BEVERAGE*

- **Non-metallic solution contact**
Rubber lined steel chamber with CPVC internals and swing bolt cover closure. Maximum temperature 180°F (82°C) (See a chemical resistance chart)
- **Cartridge or disc designs**
- **High flow rates** up to 18,900 GPH (71,500 LPH)
- **Large filtration area** —
Disc models — 60, 78 or 105 sq. ft. (5.6, 7.2, 9.7 sq.m) Cartridge models — 420, 630 or 840 sq. ft. (39, 59 or 78 sq. m)
- **Two-part epoxy paint, stainless steel fasteners**

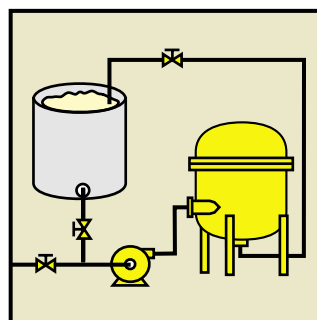
The 'DR' filter chambers are designed for quality filtration of plating and other chemical solutions. The high surface area with I.D. and O.D. edge seals of filter discs assures optimum performance and clarity of solution.

Disc filters can be used with a precoat of filter aid alone or with a mixture of filter aid and powdered carbon for organic removal. Some applications may allow filtration without a media precoat. Chambers include complete set of polypropylene plates, drain and vent connections.

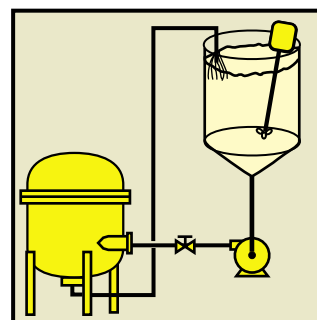
The 'CR' chambers are designed for use with cartridges for applications where higher dirt holding capability is required. The internal cartridge assembly can hold cartridges of DOE / SOE or sleeve design and utilizes individual cartridge guides with screw on caps for a positive cartridge seal. The cartridge assembly replaces the disc stack. All other specifications are the same as the 'DR' chambers.



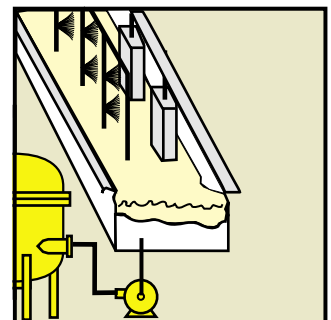
PLATING



CHEMICAL



BATCH TREATMENT



CLEANING

CHAMBER SPECIFICATIONS

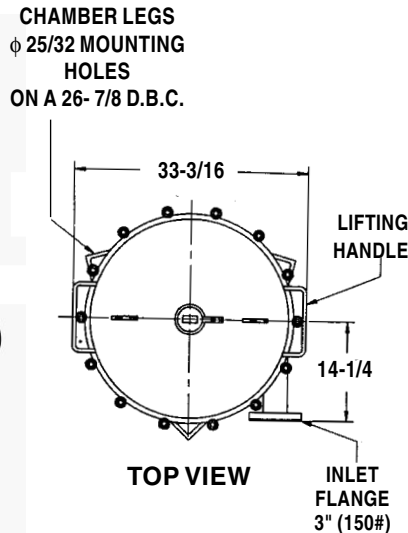
C-306D

Series 'DR' / 'CR' filter chambers are carbon steel fabricated, then vulcanized rubber lined to provide years of trouble-free service. Exterior metal surfaces are primed and coated two part epoxy gray enamel. Swing bolt hardware is stainless steel. Non-metallic internals are CPVC or poly-propylene. Bottom half of the chamber is common for

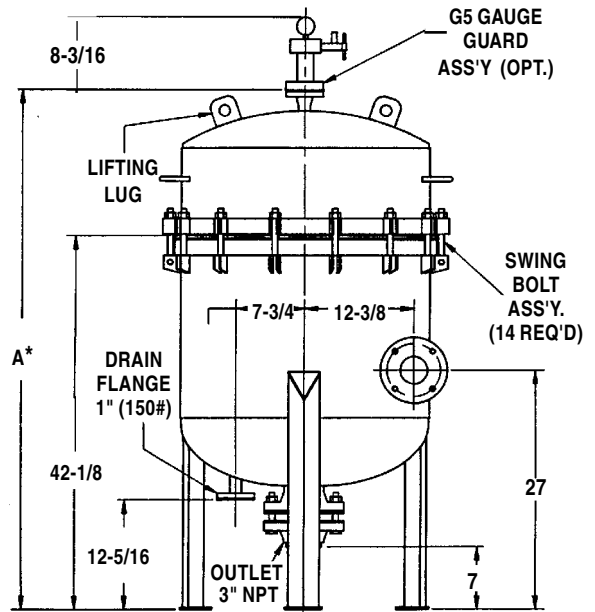
the three cover sizes. Tangent inlet is 3" flange, drain and vent ports are 1" flanged. Bottom center outlet is 3" NPT which facilitates convenient direction of discharge piping. Cover includes lift handles. Hoist lugs are provided on the two large models. Chamber includes mounting pads for optional davit lift for cover.



MODEL DR78-3
with cover removed



Maximum Operating
Pressure: 55 PSI (380 kPa)



MODEL	*A DIMENSIONS (In.)
_R60-3	50-11/16
_R78-3	58-11/16
_R105-3	68-15/16

TO ORDER, use Price Code No.

DISC CHAMBER MODEL	NO. OF DISCS	AREA		MAX. FLOW		SLUDGE CAP.		SHIPPING WT.		PRICE CODE NUMBER
		Sq. Ft.	Sq. m.	GPM	LPM	Ft. ³	Liters	Lbs.	kg.	
DR60-3	20	60	5.6	180	680	3.4	96.2	660	300	78-1376
DR78-3	26	78	7.2	235	890	4.4	124.5	760	345	78-1375
DR105-3	35	105	9.7	315	1190	5.9	166.9	800	363	78-1374

CARTRIDGE CHAMBER MODEL	NO. OF CARTRIDGES [†]	AREA		MAX. FLOW		SHIPPING WT.		PRICE CODE NUMBER
		Sq. Ft.	Sq. m.	GPM	LPM	Lbs.	kg.	
CR1200	120 - 10"	420	39			660	300	78-1466
CR1800	180 - 10"	630	59	350	1320	760	345	78-1465
CR2400	240 - 10"	840	78			800	363	78-1464

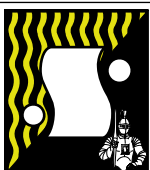
FILTER DISCS PACKAGED IN CARTONS OF 250			
DISC MODEL	MICRON RATING	PRICE CODE NO.	
		Cellulose	Polypropylene
** E5 x 24	5	78-1420	78-1460
** E10 x 24	10	78-1421	78-1461
** E20 x 24	20	78-1422	78-1462
** E40 x 24	40	78-1423	78-1463

OPTIONAL	ADD TO MODEL	PRICE CODE NUMBER
Pressure gauge 0-60 PSI mounted on CPVC gauge guard with diaphragm and CPVC vent valve	-G5	78-0073
Davit cover lift Model __ R60-3 __ R78-3 __ R105-3	-D	78-1602 78-1603 78-1604

** Insert **C** for cellulose or **P** for polypropylene
F.O.B. Northbrook, Illinois

[†] Order cartridges separately. See Bulletin M-109.

Specifications subject to change without notice.



SERFILCO, LTD.

2900 MacArthur Blvd. 847-509-2900
Northbrook, IL 60062-2005 U.S.A. 800-323-5431
e-mail: sales@serfilco.com FAX: 847-559-1995
www.serfilco.com

DISTRIBUTED BY