



SERIES 'Y' RUBBER LINED STEEL FILTER CHAMBERS

24-445 FILTER CARTRIDGES or 12-89 CLEANABLE SLEEVES



- **Non-metallic solution contact**
Rubber or Hypalon lined, steel construction
- **High flow rate - up to 10 GPM per filter tube as applicable**
- **Large dirt holding capacity**
From 84 to 1557 sq.ft. w/cartridges or 14 to 267 sq.ft. w/sleeves
- **ASME code design - optional**
- **Welded construction**
- **Cartridge or precoat filtration**
- **Removable cage assembly**
Easy to service
- **Flanged inlet, outlet and vent ports**

SERIES 'Y' filter chambers are made of carbon steel with vulcanized rubber or Hypalon® lining to provide non-metallic solution contact for use with a wide range of chemical solutions. Corrosion resistance in each case is limited to the materials used in construction, including all components. It should be noted that corrosion resistance varies at different temperatures. Consult Bulletin TC-101 and Sales Department.

These chambers are ideal for in-line applications or they can be used with a pump and motor filtration system for various chemical applications.

HEAVY CONSTRUCTION

Units are of welded construction, 75 PSI design.
Optional: ASME code design and code stamp (75 and 150 PSI).

EASY TO SERVICE

These filter chambers are specifically engineered and built for fast, easy servicing. Bottom separator plate is completely removable. All chambers have flanged inlet, outlet and vent.

DESIGNED for "CHOICE" of FILTER MEDIA

Standard chamber will accept double open end (DOE) depth, pleated, membrane and carbon cartridges from sub-micron to 100 micron retention. Cleanable sleeves designed for precoating are also available.

WIDE RANGE of SIZES

Units are available in a wide range of sizes from 24 filter cartridges to a total of 445 cartridges to provide the highest flow rate with the largest dirt holding capacity.

SCORES OF APPLICATIONS

- Food products
- Chemical solutions
- Pharmaceuticals
- Petro-chemicals
- Photographic chemicals
- Industrial liquids and gases
- Water treatment
- Electroplating solutions
- Cleaning solutions

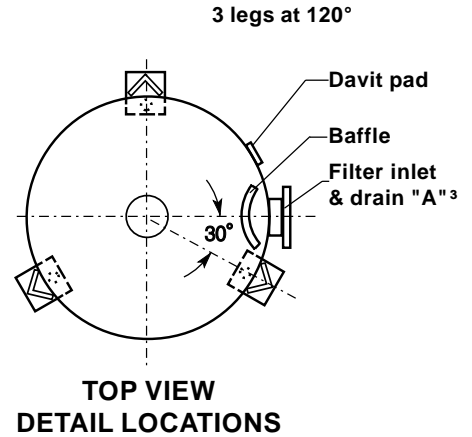
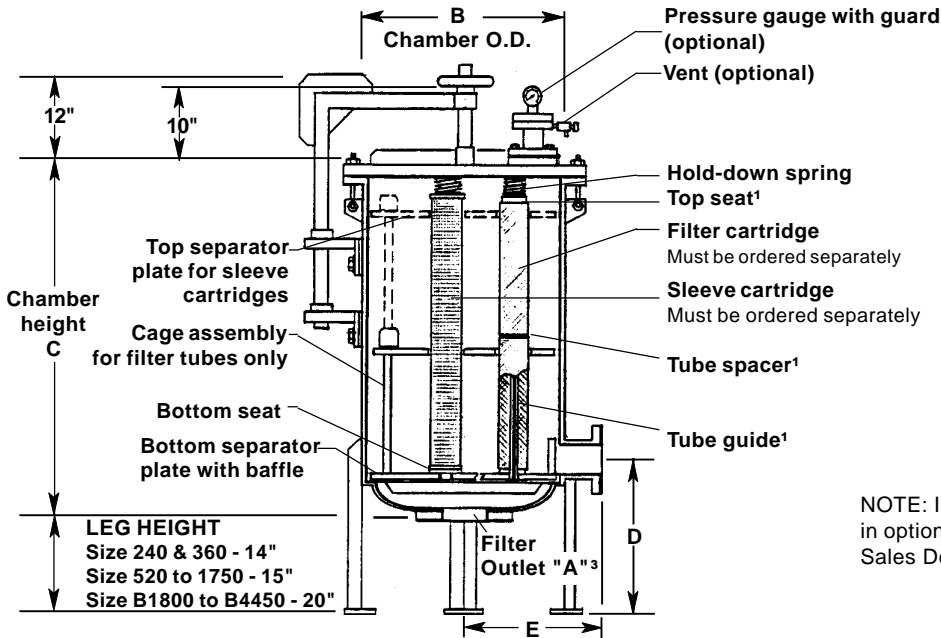
FILTER CHAMBER MODEL		FULL COVER GASKET	MIDDLE TUBE DIVIDER	BOTTOM SEPARATOR PLATE	SPRING	V-POST	TOP and BOTTOM SEAT PLATE	SEPARATOR PLATE GASKET
YR	Steel-rubber lined	Rubber	CPVC	CPVC	Vinyl	CPVC	CPVC	Rubber
YH	Steel-Hypalon lined	Hypalon	CPVC	CPVC	Vinyl	CPVC	CPVC	Hypalon

SERIES 'Y' FILTER CHAMBERS Specifications and Ordering Information

CAGE ASSEMBLY FOR EASY SERVICE

SERIES 'Y' chambers are designed for 75 PSI maximum operating pressure, with removable bottom separator plate. They include stainless steel swing bolts and fasteners, with external steel surfaces painted two part epoxy gray. Models with "B" designation provide maximum space between filter media for

optimum solids loading capacity or precoat cake thickener. Depth, pleated, sleeve or carbon cartridges can be used in these chambers and are ordered separately. Chambers as described are for DOE (Double Open End) cartridges.²



NOTE: Inlet and outlet connections are available in optional sizes, locations and styles. Consult Sales Department.

MODEL AND CHAMBER SIZE	DIMENSIONS ("E" w/rubber lining)								SHIP. WEIGHT		MODEL PREFIX LETTER & PRICE CODE NO.			
	A		B		C		D		E		YR	YH		
	in.	mm	in.	mm	in.	mm	in.	mm	in.	mm	RUBBER LINED STEEL	HYPALON LINED STEEL		
_240-2					32	813					350	159	78-0002	78-0036A
_360-2					42	1067					375	170	78-0003	78-0037A
_520-2	2	51	18	457	32	813	22	559	12	305	360	163	78-0004	78-0038A
_780-2					42	1067					390	177	78-0005	78-0039A
_B540-4					45	1143					600	272	78-0006	78-0040A
_870-4					45	1143					650	295	78-0007	78-0041A
_B900-4	4	102	22	559	65	1651	26	660	14.5	368	800	363	78-0008	78-0042A
_1050-4					45	1143					850	386	78-0009	78-0043A
_1450-4					65	1651					900	408	78-0010	78-0044A
_1750-4					65	1651					1000	454	78-0011	78-0045A
_B1800-6	6	152	28	711	65	1651	32.6	829	18	457	1200	544	78-0012	78-0046A
_3000-6					65	1651					1400	635	78-0013	78-0047A
_B3000-8	8	203	32	813	65	1651	35	889	20	508	1500	680	78-0014	78-0048A
_4450-8					65	1651					1800	816	78-0015	78-0049A
_B4450-8	8	203	44	1113	65	1651	39	991	26	660	1950	885	78-0016	78-0050A

CARTRIDGES or SLEEVES REQUIRED to FILL FILTER CHAMBER ⁴							
FILTER CARTS. REQ'D				CLEANABLE SLEEVES			
Number of depth filter cartridges	Solids cap. depth area	Sleeves req'd	Total surface area	ADD PRICE CODE NO.	No.		Lgth. in.
					10"	20"	
10"	20"	30"	Sq. ft.	Sq. ft.	Sq. ft.	Sq. ft.	Sq. ft.
24 or 36 or 52 or 78 or	12 - 26	-	84	12 20	14.4	78-0201	
			126	12 30	21.6	78-0202	
			182	26 20	31.2	78-0412	
			273	26 30	46.8	78-0413	
54 or 87 or 90 or 105 or 145 or	- 29	18	189	18 30	32.4	78-0414	
			305	29 30	52.2	78-0415	
		18 + 18	315	18 50	54.0	78-0404	
		- 35	367	35 30	63.0	78-0405	
	29 + 29		508	29 50	87.0	78-0406	
175 or 180 or 300 or	35 + 35		612	35 50	105.0	78-0407	
		36 + 36	630	36 50	108.0	78-0408	
		60 + 60	1050	60 50	180.0	78-0409	
300 or 445 or	60 + 60		1050	60 50	180.0	78-0409	
	89 + 89		1557	89 50	267.0	78-0411	
445 or	89 + 89		1557	89 50	267.0	78-0411	

OPTIONAL

DESCRIPTION	ADD TO MODEL NO.	PRICE CODE NUMBER			
		18" dia.	22" dia.	28" dia.	32" dia.
Davit cover lift	-D	78-0066	78-0066	78-0067	78-0068
75 PSI ASME code design - non stamped	-75	78-1381	78-1382	78-1383	78-1384
150 PSI ASME code design - non stamped	-150	78-0079	78-0080	78-0081	78-0082
ASME code stamp (75 & 150 PSI)	-X	78-0084			
Pressure gauge mounted on CPVC gauge guard with diaphragm & CPVC valve assembly	-G5	78-0073			
222 "O"-ring cartridge seats for SOE (Single Open End) cartridges ²	-2	add -2			

¹ Not included when sleeve assembly is ordered.
² SOE cartridge seats are optional.
³ Use of a tee pipe fitting on inlet & outlet flange serves as a drain.
⁴ Filter media must be ordered separately.

Specifications subject to change without notice.