

SERIES 'WT' PLASTIC FILTER CHAMBERS

For filtration & purification of solutions
in the following processes:

WATER TREATMENT / CHEMICALS / D.I. WATER
R.O. & U.F. PREFILTER*

BRACKISH WATER / SEA WATER
WASTE TREATMENT / OEM / INDUSTRIAL LIQUIDS

These filter chambers are designed for in-line or recirculatory filtration of chemicals used in processes where clarification or purification will extend solution life and improve product quality.

FEATURES:

- **Non-metallic solution contact**
for acids or alkalis
(See a chemical resistance chart)
- **Heavy duty construction**
 - **Rated 125 PSI at 70°F (8.5 BAR @ 21°C)**
50 PSI at 120°F (3.4 BAR @ 49°C)
 - **ABS / PVC construction**
with EPDM "O"-ring (Viton® optional)
- **Four model sizes available**
for 9¾", 10", 20", 30" and 40" cartridges
- **2" NPT inlet and outlet**
with 1/2" NPT drain and 1/4" NPT vent
with choice of outlet direction
Available with BSP and flange connections
- **Quick opening for easy servicing**
For use with a variety of filter media:
 - Depth wound, pleated, carbon and membrane cartridges
 - Positive cartridge seal for -
Standard - DOE (Double Open End) or
Optional - SOE (Single Open End) for 222 "O"-ring
 - Cleanable sleeves (used with or without precoat)

Cartridges must be ordered separately. Refer to Filter Media.



The Series 'WT' Plastic Filter Chamber is designed for total corrosion resistance, versatility of use, high flow rates at low pressure drop and ease of cartridge replacement. Each model holds seven unit length filter cartridges; 9-3/4", 10", 20", 30" or 40" lengths. Cartridge style may be wound depth type (maximum diameter 2.75") or high efficiency pleated membrane style (maximum diameter 2.875"). Quick opening eye nut-swing bolt closure allows ease of cartridge exchange without tools, spillage or chamber draining. Cartridges are securely sealed by means of a pressure plate with plastic nut handle before cover is replaced. Optional cross post set allows stacking of 10" depth cartridges in chamber. Standard location of outlet is opposite inlet as illustrated above. Outlet may also be provided at 90° increments to offer the most convenient arrangement for piping.

CAPACITIES

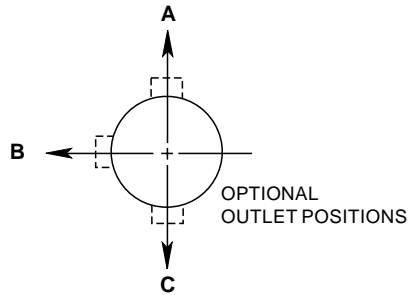
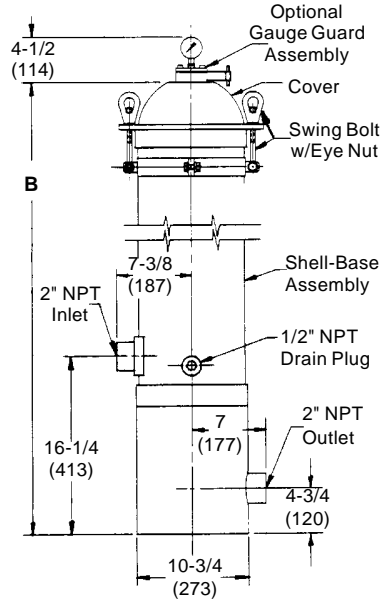
Flow rates up to 140 GPM (530 LPM) depending upon style and length of filter cartridge, solids content, viscosity, pressure drop, size of connection and degree of clarity desired. Pressure ratings of filter chambers depend upon the temperature of solutions being filtered. See PRESSURE TABLE on next page.

* Use a standpipe or pulsation dampener when operating with high pressure pumps or if using quick closing valves which can cause "water hammer".

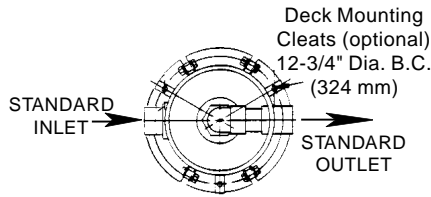
SERIES 'WT' FILTER CHAMBERS (cont'd)

SERIES 'WT' CHAMBERS

| DESCRIPTION | MODEL NUMBER | PRICE CODE NUMBER |
|--|--------------|-------------------|
| Floor standing unit constructed of high luster white PVC and ABS. Includes EPDM "O"-ring, stainless steel swing bolt cover closure, with vinyl coated bracket and chrome plated eye nuts. Inlet/outlet connections for 2" NPT, 1/2" NPT drain, 1/4" NPT vent plug. | PL70S-2 | 78-1150 A |
| | PL140S-2 | 78-1151 A |
| | PL210S-2 | 78-1152 A |
| | PL280S-2 | 78-1153 A |



BOTTOM VIEW



BOTTOM VIEW

| FLOW RATE * @ PRESSURE DIFFERENTIAL | | | |
|--|-----|-----|-----|
| GPM | LPM | PSI | Bar |
| 35 | 132 | 1 | .07 |
| 70 | 265 | 1 | .07 |
| 105 | 397 | 2 | .14 |
| 140 | 530 | 2 | .14 |

* Using 10 micron polypropylene depth cartridges, 5 GPM/10" length.

| SPECIFICATIONS | | | | | | | | | | | | |
|----------------|----------|------|--------------|-----|--------------------|-------------|-------------------|--------------|-----|--------------------------------|-------|----------|
| MODEL NUMBER | HEIGHT B | | SHIPPING WT. | | CARTRIDGE CAPACITY | | SOLIDS DEPTH AREA | MAXIMUM FLOW | | MAXIMUM PSI AT OPERATING TEMP. | | |
| | Inches | mm | Lbs. | Kg. | 10 inch | Unit length | Sq. ft. | U.S. GPM | LPM | ALL MODELS | Temp. | Max. PSI |
| PL70S-2 | 29-3/8 | 746 | 55 | 25 | 7 | 7 of 10" | 24.5 | 70 | 265 | | 70°F | 125 |
| PL140S-2 | 39-3/8 | 1000 | 60 | 27 | 14 | 7 of 20" | 49.0 | 100 | 378 | | 100°F | 77 |
| PL210S-2 | 49-3/8 | 1254 | 65 | 29 | 21 | 7 of 30" | 73.5 | 140 | 530 | | 120°F | 50 |
| PL280S-2 | 59-3/8 | 1508 | 75 | 34 | 28 | 7 of 40" | 98.0 | 140 | 530 | 140°F | 28 | |

OPTIONAL

| DESCRIPTION | ADD to MODEL NO. | USE SEPARATE PRICE CODE NO. |
|--|--|--|
| Pressure gauge, 0-160 PSI, on polypropylene gauge guard with diaphragm and CPVC vent valve | -G7 | 78-0078 |
| Outlet direction | A, B or C | N/C |
| Viton "O"-ring | -V | 78-1121 |
| Connections -Flange, 2" PVC 2" BSP | -F -BSP | 78-1122 Consult Sales Dept. |
| 316 stainless steel swing bolts, clevis pins, hex lock nuts and washers | -SS | 78-1123 |
| Deck anchor cleats (set of three) | -D | 78-1124A |
| CPVC cross post set (to stack 10" & 20" cartridges) Fits into standard tube guides | For Model: PL140S-2 PL210S-2 PL280S-2 | C2 78-1125A C3 78-1125B C4 78-1125C |
| Ultraviolet outdoor weather jacket | For Model: PL70S-2 PL140S-2 PL210S-2 PL280S-2 | UV 88-1318 1 88-1318 2 88-1318 3 88-1318 4 |
| Seats for SOE (Single Open End) cartridges with 222 "O"-ring | -2 | Add to PCN -2 |